

+
S
A
D

INTERIOR DESIGN
CAPABILITY STATEMENT



We acknowledge First Nations peoples and their continuing connection to land, waters and culture, because we strongly believe in reconciliation and collaborative engagement for a better future.

We pay our respects to Elders past, present and emerging, whose knowledge, traditions and stories guide custodianship on what will always be their ancestral lands.



D J
+
A S

DJAS Architecture Pty Ltd was established in the ACT in 1987. Over the years, we have grown with design studios in Canberra, Brisbane and Armidale. DJAS is a leading design practice with professional architects, urban, interior and graphic designers.

OUR COMPANY

DJAS ARCHITECTURE



WHO ARE WE?

DJAS has a national and international reputation for high quality design based on an ability to synthesise the conflicting demands of creativity, planning, staff involvement, cost effectiveness and quality design.

As an interdisciplinary design practice of professionals, we seek creative solutions within the built environment. We are motivated by the desire to provide sensitive and stimulating environments that articulate and facilitate all aspects of human encounter and endeavour.

DJAS works in a studio environment with all company directors and senior management seated with our team allowing for strong communication, project mentoring and quality control within our design process.

The success of our approach is demonstrated by the numerous awards we have received from the Australian Institute of Architects and other industry organisations.

OUR LEGACY



ESTABLISHED IN THE ACT IN 1987

DJAS Architecture opened its first studio in 1987 located in Kingston, ACT and has now been operating for over 38 years.



NATION WIDE OFFICES IN ACT, QLD & NSW

DJAS Architecture has a presence in Canberra (ACT), Brisbane (QLD) and Armidale (NSW).



NATIONAL TEAM OF 34 EMPLOYEES

With offices across Australia, DJAS employs a diverse group of architects and designers specialising in a range of fields.



WORKING WITH 35 GOVT. DEPARTMENTS

DJAS have worked alongside more than 35 government departments to produce amazing interior and architectural fitouts.



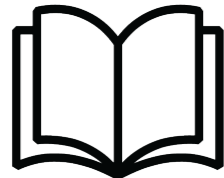
350,000 SQM OF OFFICE FITOUTS

In the last 3 years, DJAS has designed over 450,000 sqm of office fitouts in various government and commercial spaces.



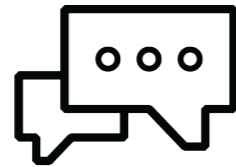
ISO CERTIFIED

DJAS Architecture maintain certifications in ISO 9001: 2015, AS ISO 45001 & ISO 14001: 2015.



TEACHING PRACTICE OF STUDENTS

DJAS are a teaching practice employing and supporting students first steps into the professional workforce.



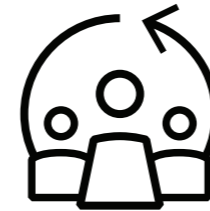
20+ YEARS AVERAGE LENGTH OF SERVICE

Senior management have an average length of 20+ years service totaling at 138 years combined industry experience.



RECIPIENT OF 70+ DESIGN AWARDS

Throughout our many years operating, DJAS have received over 70 different design and architecture awards.



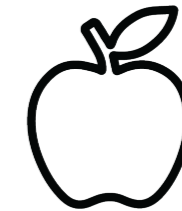
DIVERSITY IN THE WORKPLACE

DJAS is proud to employ a gender diverse team, with rich and varied cultural influences and backgrounds.



CARBON NEUTRAL ORGANISATION

DJAS continues to be a carbon neutral organisation and certified Climate Active network member.



HEALTHIER WORKPLACE

DJAS are a recognised ACT 'Healthier Workplace' prioritising a balance of work, lifestyle and professional development.

OUR LEADERSHIP



James Andrews
Director



James Hetherington
Director



Alisa Moss
Director



Catherine Carter
Chief Executive Officer



Ratko Vatauk
Senior Project Lead



Adam Litherland
Senior Associate



Kate Bell
Senior Associate



Courtney Walmsley
Senior Project Lead



Ben Pierce
Architect

OUR TEAM

Our team comprises of accomplished architects and interior designers who are experienced in the design and delivery of specialty and unique environments.

OUR CEO

At DJAS, we believe in a collaborative approach to design, working closely with clients to understand their unique needs and vision. Our team of professionals, including architects, interior designers and change managers, is dedicated to delivering exceptional design solutions that exceed expectations.

We look forward to the opportunity to discuss and explore how we can contribute to future projects.



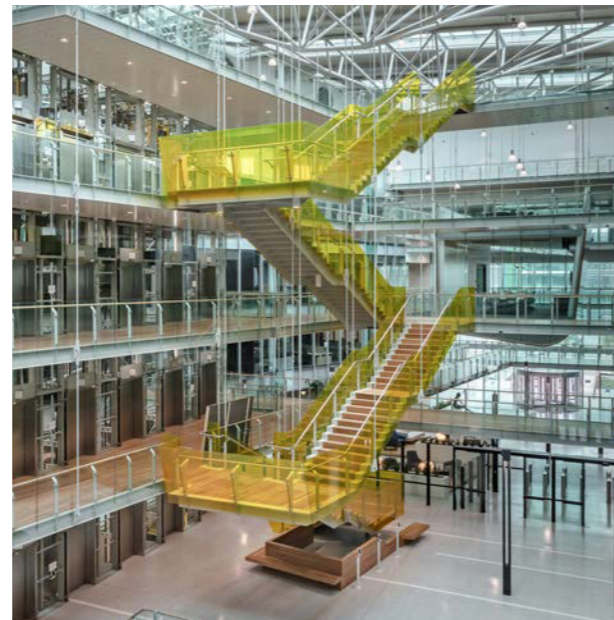
PICTURED
Home Affairs, ACT

OUR DISCIPLINES

01. ARCHITECTURE



02. INTERIOR DESIGN



03. URBAN DESIGN



04. GRAPHIC DESIGN



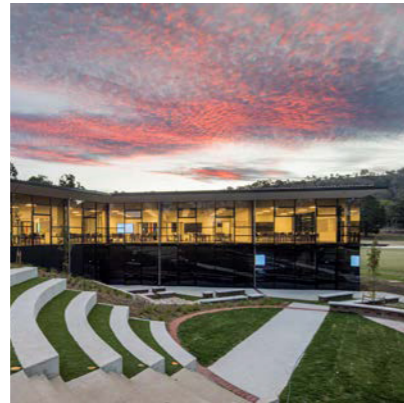
OUR SECTORS

01. WORKPLACE



- + Offices
- + Commercial
- + Government Base Building Repositioning

02. EDUCATION



- + Childcare & Early Education
- + Schools
- + Vocational
- + Universities
- + Student Accommodation

03. HEALTH



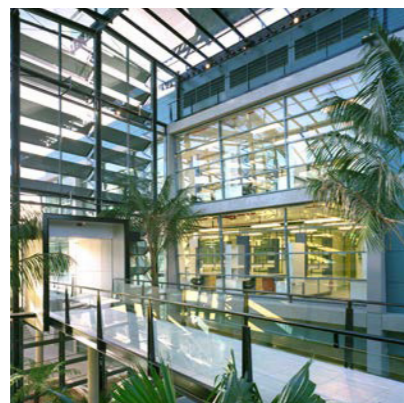
- + Hospitals
- + Medical Centres
- + Aged Care

04. PUBLIC ARCHITECTURE



- + Community Facilities
- + Libraries
- + Art Galleries
- + Museums
- + Sports Facilities

05. RESEARCH



- + Laboratory
- + Technical
- + Temperature Controlled Environments

06. SECURE ENVIRONMENT



- + NV2 Security Clearance
- + Access Controlled Workplace
- + Crisis Management Centres
- + Operations Centres
- + Data Centres

07. RESIDENTIAL



- + Support Accommodation
- + Multi Dwelling Residential
- + Single Dwelling Residential
- + Embassies & Diplomatic Residential

08. AVIATION



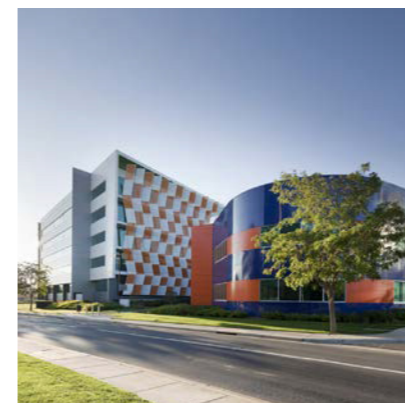
- + Airports
- + Aircraft Maintenance
- + Charter Operations

09. INDUSTRIAL



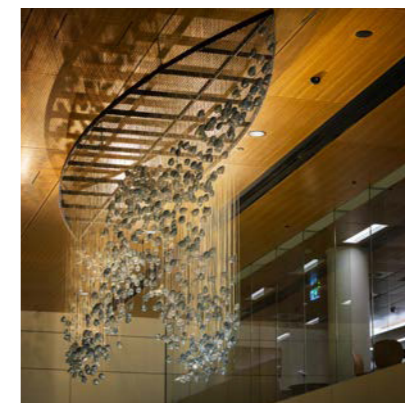
- + Workshop
- + Vehicle Maintenance
- + Warehouse
- + Data Centres

10. MASTER PLANNING



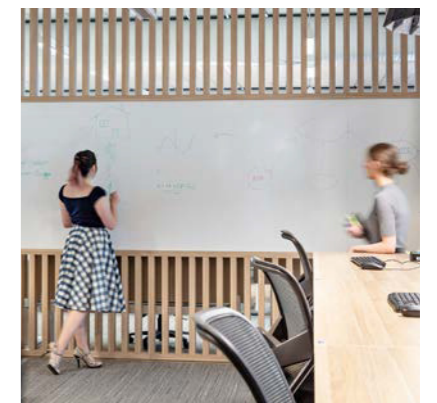
- + Urban Design
- + Campus Planning
- + Precinct Development
- + Strategic Asset Management
- + Space Occupancy & Utilisation

11. SPECIALTY



- + Small Scale Interventions
- + Artwork Coordination
- + Heritage Coordination
- + Exhibition Design

12. CHANGE STRATEGY



- + Workplace Strategy
- + Change Management
- + Post-Occupancy Review

OUR APPROACH



PICTURED ABW Braddon Hub, ACT

THE DJAS APPROACH

At DJAS we pride ourselves on our outstanding design services. Our project design process is a disciplined one and, on your project, we will take you through the project phases in sequential stages from inception to completion.

Design is an iterative process which involves; teamwork, attention to detail, coordination with services and close collaboration with stakeholders.

When we are appointed to design a new project, we approach the project as a collaboration between the client, project manager and designers. The most successful buildings are created within a team environment.

As designers we like to work closely with our clients to determine needs and discuss and critique the design as it evolves. We welcome the input from other members of the project team. As we seek to create innovative, energised and professional places for people to go about their daily life.

Our practice is acknowledged for adopting an open system of client / consultant dialogue whereby planning solutions are resolved in an interactive design process. We enjoy the challenges of working with large user groups, and have facilitation experts who can lead the design and planning process.

Our reputation lies in our ability to lead, explore, conciliate and resolve the critical issues of the planning process. We understand that we can only meet out client's objectives through comprehensive client and consultant dialogue.

WHY US?

DJAS is different. Every project we deliver is different because every one of our clients comes to us with a unique proposal. It's a pleasure to collaborate with each client in realising their project to bring our expertise to the creation of authentic and enduring design solutions.



DESIGNING FOR CLIENTS

DJAS has extensive local, national, and international experience in architecture and interior projects. Our project portfolio demonstrates our ability to deliver successful and varied projects in both scale and complexity.



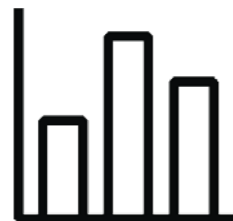
TECHNOLOGY & COMMUNICATION

In house technology and digital team to enhance project integration and collaboration with 3D visualisation, information transfer and VR experiences.



TECHNICAL COMPETENCE

A reputation for successful delivery that are both on time and on budget on numerous projects.



PROACTIVE PROCESS & MANAGEMENT

A proactive approach to design combined with proven management systems to manage risk and capitalise on opportunities.



A design practice which strongly believes in collaboration and bringing the 'right people' to the table. The concept of 'co-design' or 'open collaboration' is one of our strongest design philosophies. We are open and transparent with our design process and expertise.



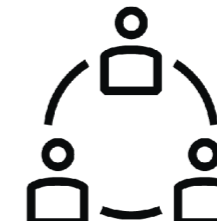
A BALANCED & COMMITTED TEAM

Which combines technical knowledge with the intuitive design skills of one of Australia's most respected design firms. Our design team is abreast of all current trends, founded on experience and research.



SUSTAINABILITY & LOW ENERGY DESIGN

We have received numerous awards for environmentally sustainable design including the first 5 Star Greenstar Education Building in the ACT and the first 5 Star Greenstar office building in Australia.



THE DESIGN TEAM

Non-hierarchical design team allowing for skilled and experienced designers present in all projects, large or small.



THE DJAS DNA

Being a skilled and multi-faceted design studio of graphic and interior designers, workplace strategists, architects and urban designers.

OUR SUSTAINABILITY IN DESIGN



PICTURED
Home Affairs, ACT



SUSTAINABILITY

As most of us spend more than 90% of our lives in an internal environment, we not only take care in delivering aesthetically pleasing working conditions we also pay close attention to user comfort and the quality of the indoor environment.

The cost of procuring a new building is only a fraction of the cost of retaining staff and maintaining staff performance. It is scientifically proven that there is a direct correlation between staff general sense of well-being and staff performance with the internal working environment.

The DJAS design team is active in designing to an environmentally sustainable manner, paying close attention to the creation of a healthy indoor environment.

We are focused on delivering a holistic approach to working environments; one which promotes positive working conditions and provides a sense of community within the office. Office environments which maximise natural light and external views - reduce energy and water consumption.

We will actively reduce the use of materials which contain hazardous emission and are detrimental to the quality of the indoor environment. We promote the specification of furniture and equipment which are both friendly for the user and the environment.

We believe design should not only be focused on the aesthetics, but also focused on the creation of a healthy indoor environment. Not only being mindful of how a person sits and works but also the quality of the air we inhale, and our sense of well-being.

Our practice is committed to the design of sustainable buildings, and has been at the forefront of sustainable design since the design of the Australian Greenhouse Office in 2001.

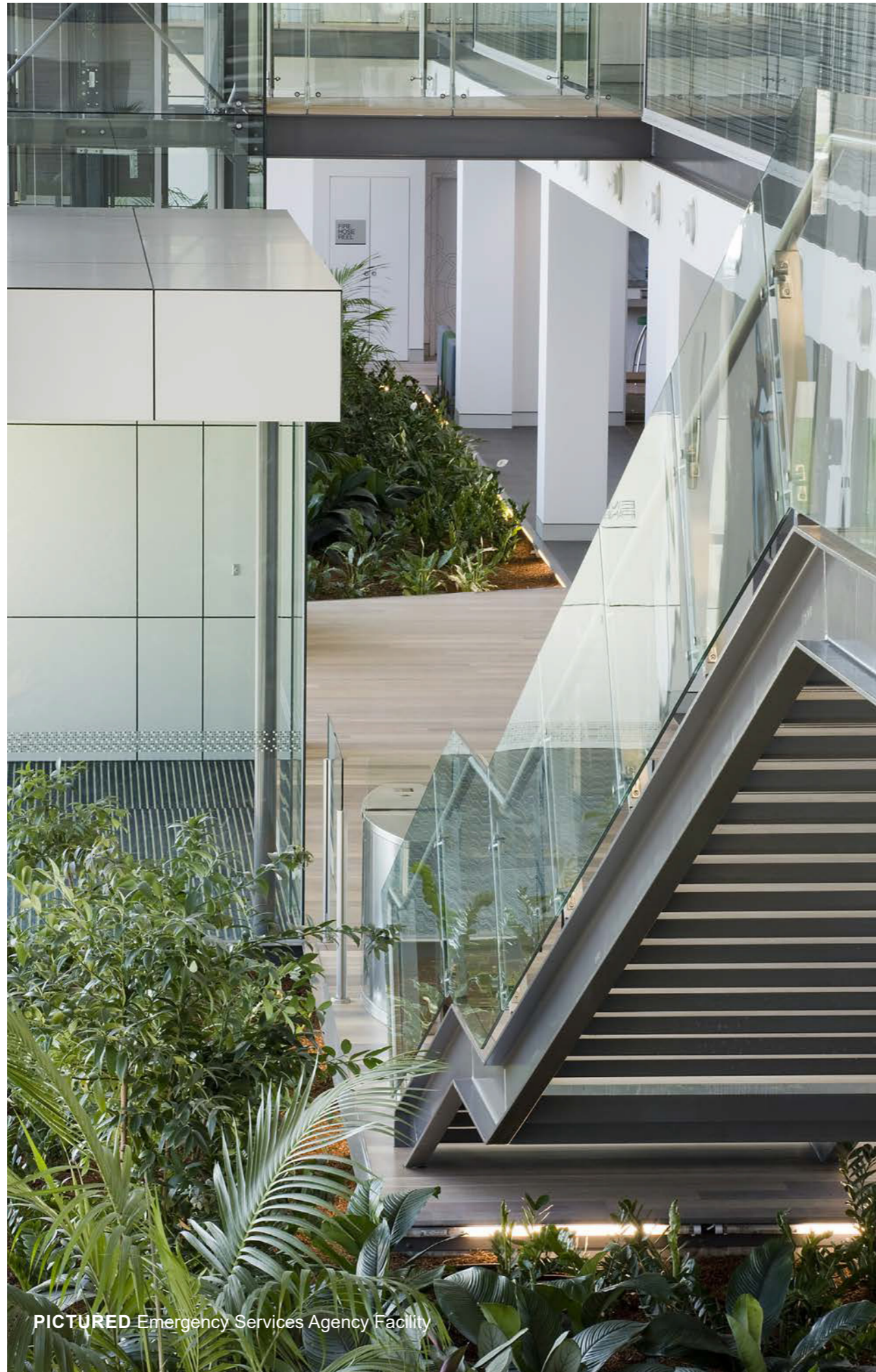
Notable projects include:

- + John Gorton Building,
- + Australian Greenhouse Office +
- 8 Brindabella Circuit,
- + Brindabella
- + Australian Research Council
- + 3, 5, 7 Molonglo Drive,
- + Brindabella Business Park
- + Caroline Chisholm Centre - New Centrelink Headquarters
- + University of Canberra NATSEM

CONTINUED

At DJAS Architecture we aim to create a healthy environment through commercial and sustainable environmental design. DJAS architects and interior designers are one of Australia's most awarded environmentally sensitive design teams and were among Australia's first architects to successfully complete the Green Star design accreditation program.

We are committed to green design principles and work closely with clients to incorporate energy and environmental savings with minimal impact on buildings costs.



PICTURED Emergency Services Agency Facility

DJAS GREEN PHILOSOPHY

The Basics | Each project has its own sustainable design program, developed with key stakeholders at inception. When we commence designing a new building we aim to achieve correct solar orientation on the site, plan for floor-plates that are efficient but will permit excellent diffused daylight penetration and opportunities for natural ventilation. We also consider building mass, insulation of roofs and wall, landscape microclimate, and water harvesting.

Flexibility | Sustainable design means economy in the life cycle of the building, so we focus on designing our buildings for durability and long term flexibility with unencumbered floors that can be easily adapted to other uses and higher than normal ceiling heights that will cope with changing design standards over the life of the building.

ESD Leaders | DJAS has been at the forefront of contemporary sustainable design for over two decades. Our journey commenced with Australia's first 5 Star Green Star building and one of the first Green Star workplace designs in 2006. DJAS now embodies sustainable design attributes across all our projects. Designing for sustainability in our buildings and for our building occupants.

Green Star Professionals | We are Green Star trained professionals with staff regularly attending Green Star courses. Alisa Moss, one of our Directors, has undertaken specialist research in the USA into the design of healthy building environments.

OUR EXPERIENCE



PAST PROJECTS

PICTURED
Murmuration

EXPERIENCE

The following projects represent a snapshot of projects undertaken by our office in recent times. This select list of projects illustrates our ability to respond well and directly to a range of different design problems on a range of different scales, from small to large design solutions.

Regardless of the size; each project receives the same detailed personal attention from our design directors.

The intrinsic qualities that set DJAS apart from our competitors are that we:

- + Provide a high level of personal service from our Directors and senior design team
- + Have demonstrated ability to manage major projects
- + Are focused on project outcomes
- + Accept responsibility for project performance and quality
- + Understand the concepts and relationships between risks and performance

AUSTRALIAN MEDICAL COUNCIL

The AMC workplace is social and cultural, as much as it is functional.

The brief was to create a modern, 'blended' working environment to promote synergies within the different working groups. A mix of workplace settings was also pivotal to respond to the evolved working preferences across teams in these post pandemic times.

One key driver was the AMC Reconciliation Action Plan as it relates to the AMC Strategic Plan 'Improving Indigenous Health.' This plan recognizes that increasing Indigenous employment can have a positive impact on health. Throughout the project, Indigenous procurement was promoted, through selection of finishes, to the engagement of the managing contractor Projex.

The brief presented us with the opportunity to flex our creative muscles and put together a myriad of working environments and settings, allowing the staff an opportunity to choose and move between spaces that best suited the work at hand.



LOC: **ACT** | YEAR: **2021** | SQM: **1,575M²** | SECTOR: **WORKPLACE**



AUSTRALIAN NATIONAL AUDIT OFFICE

ANAO was an agile workplace solution. The design was a custom fit solution and anchored to the core client brief, Frugal but Clever. The design was delivered in time and under budget.

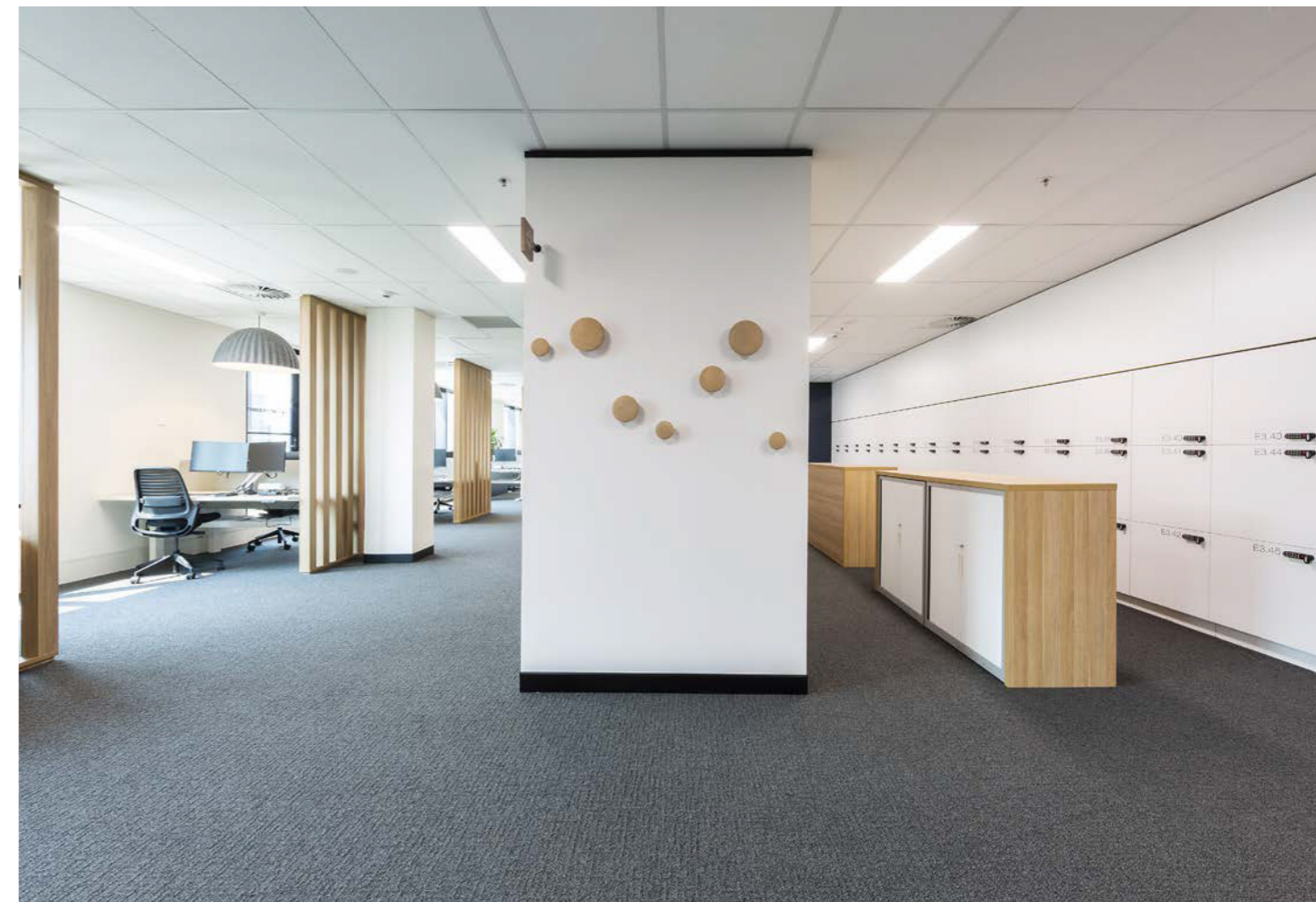
The Auditor General's primary brief was not to see a sea of workstations. DJAS created a design which played with the built zones and apertures, creating a collaborative through to personalised working hubs.

The design allowed for self-sufficient neighbourhoods, supported by a community floor and vast array of differing work and retreat places.

The design was anchored to Biophilic Design principals in building form supported. A design which was organic form and flow. The built zones provided privacy in some areas and strong connection to the natural light in others. The design form was supported with the use of materials and natural plants.



LOC: **ACT** | YEAR: **2020** | SQM: **4,750M²** | SECTOR: **WORKPLACE**



CHURCHILL TRUST

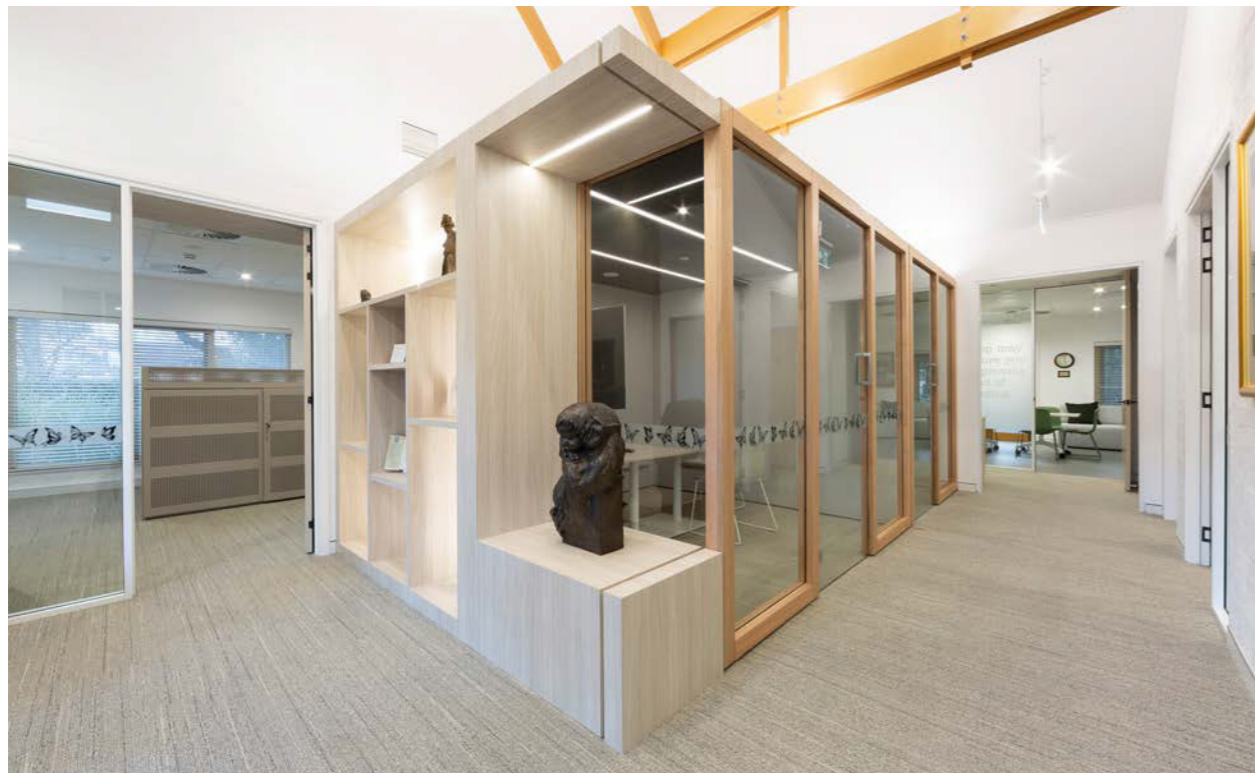
Churchill Trust was an existing fitout with space and structural restrictions. It was updated by DJAS to provide a spacious, modern working environment for ten staff. The new fitout provides opportunities for hybrid working whilst celebrating some of the unique aspects of the original building.

After occupying their building for 20 years, the Winston Churchill Memorial Trust were looking to reinvent their space. Infusing a fresh outlook into the fitout that spoke to the current teams working ethos and cultural identity was a project driver. Alongside this, upgrades to the base building to improve thermal and acoustic comfort were vital.

The humble quasi residential building allowed DJAS to create a personalised fitout minimizing enclosed offices, and maximising open workspaces. The breakout area doubles as a perfect meeting space for the team. Our design included subtle tributes to Sir Winston Churchill such as famous quotes on glazing film, butterfly graphics and a pixelated portrait of Sir Winston Churchill himself on the skylight. The building was built as the home of the Winston Churchill Memorial Trust, so it was important to retain original features and fittings.



LOC: ACT | YEAR: 2021 | SQM: 270M² | SECTOR: WORKPLACE

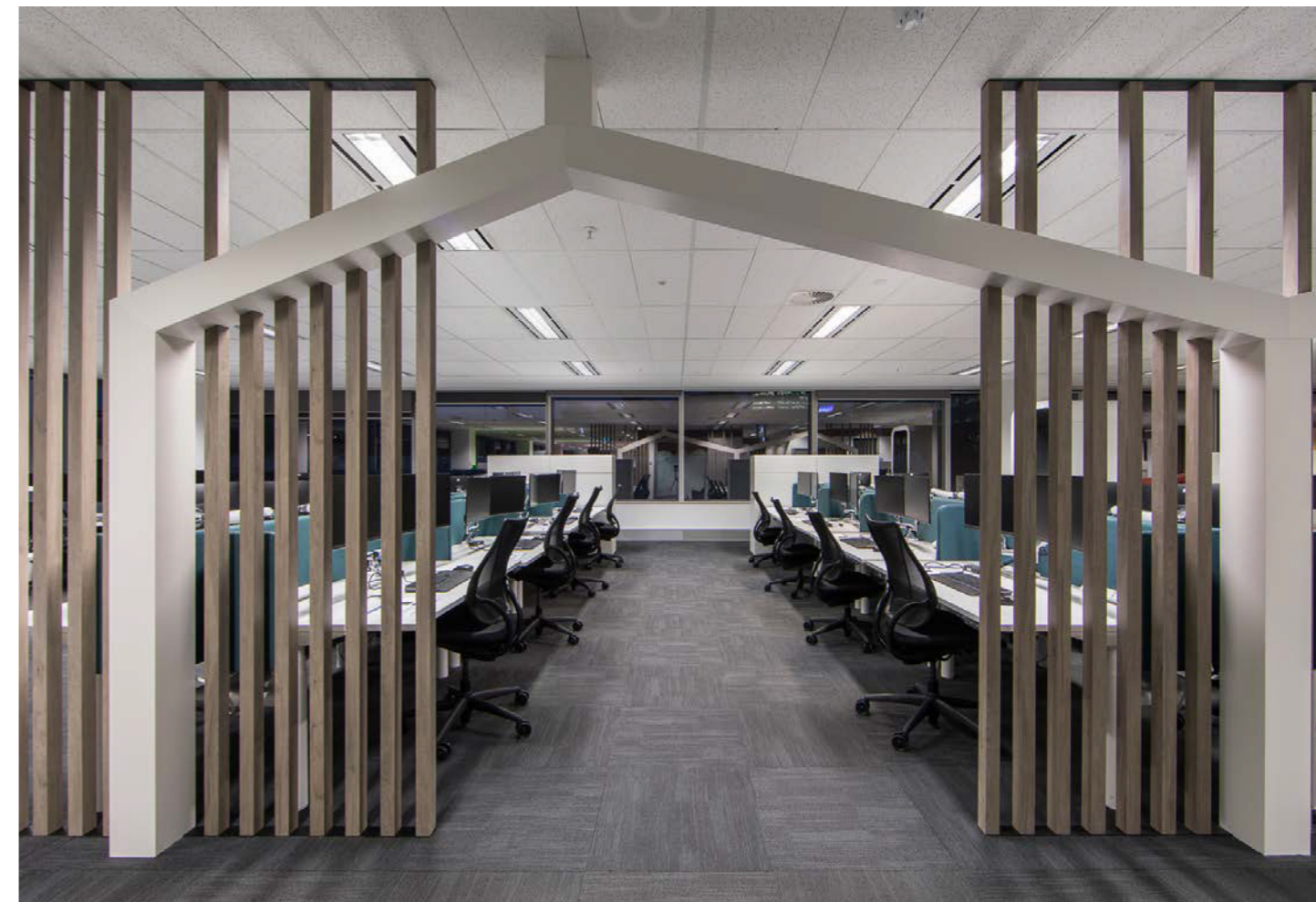


AUSTRALIAN SECURITIES & INVESTMENT COMMISSION (PERTH)

The Australian Securities and Investment Commission is Australia's integrated corporate, markets financial services and consumer credit regulator, with offices based in across Australia.

DJAS was awarded the project to meet ASIC's aspirations for a new way of working, with a strategy of rolling out an ABW workplace across its national offices, commencing with the ASIC Perth office.

DJAS provided a fit out which allowed for a landscape of work opportunities, from cockpits and focused zones, to semi-focused and collaborative zones, to anchor points and breakout hubs designed to facilitate amenity and orientation. There was also provision made for wide circulation paths, and enhanced access to natural light and vistas.



LOC: WA | YEAR: 2019 | SQM: 1,160M² | SECTOR: WORKPLACE

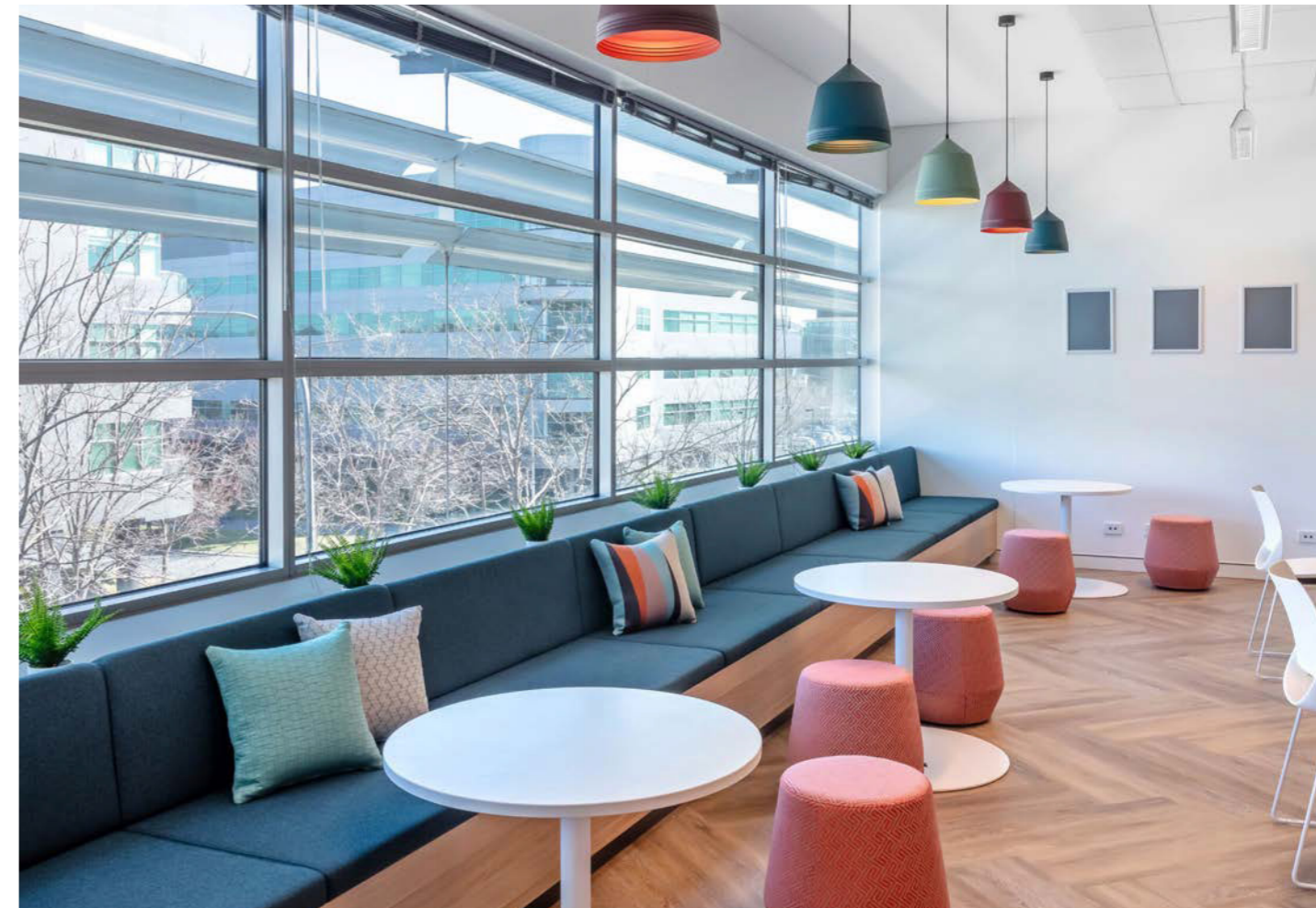


DEFENCE INNOVATION HUB

The Innovation Hub was a design in direct response to the Defence requirements. DJAS facilitated detailed briefing workshops which included online surveys, user group discussions and business line Q&A Forums.

The design response was a mix of allocated and non-allocated work points. Reflecting a landscape of working opportunities, including static height standing workbenches, collaboration hubs through to focused work pods.

The design responded not only to the Defence user groups, it responded to the base building design limitation. The western facing façade created heat and discomfort to the users. In consultation with Defence, we created a collaborative street. Taking the built zone and workstations off the façade, whilst maintaining strong access to natural and external views.



LOC: **ACT** | YEAR: **2017** | SQM: **1,000M²** | SECTOR: **WORKPLACE**

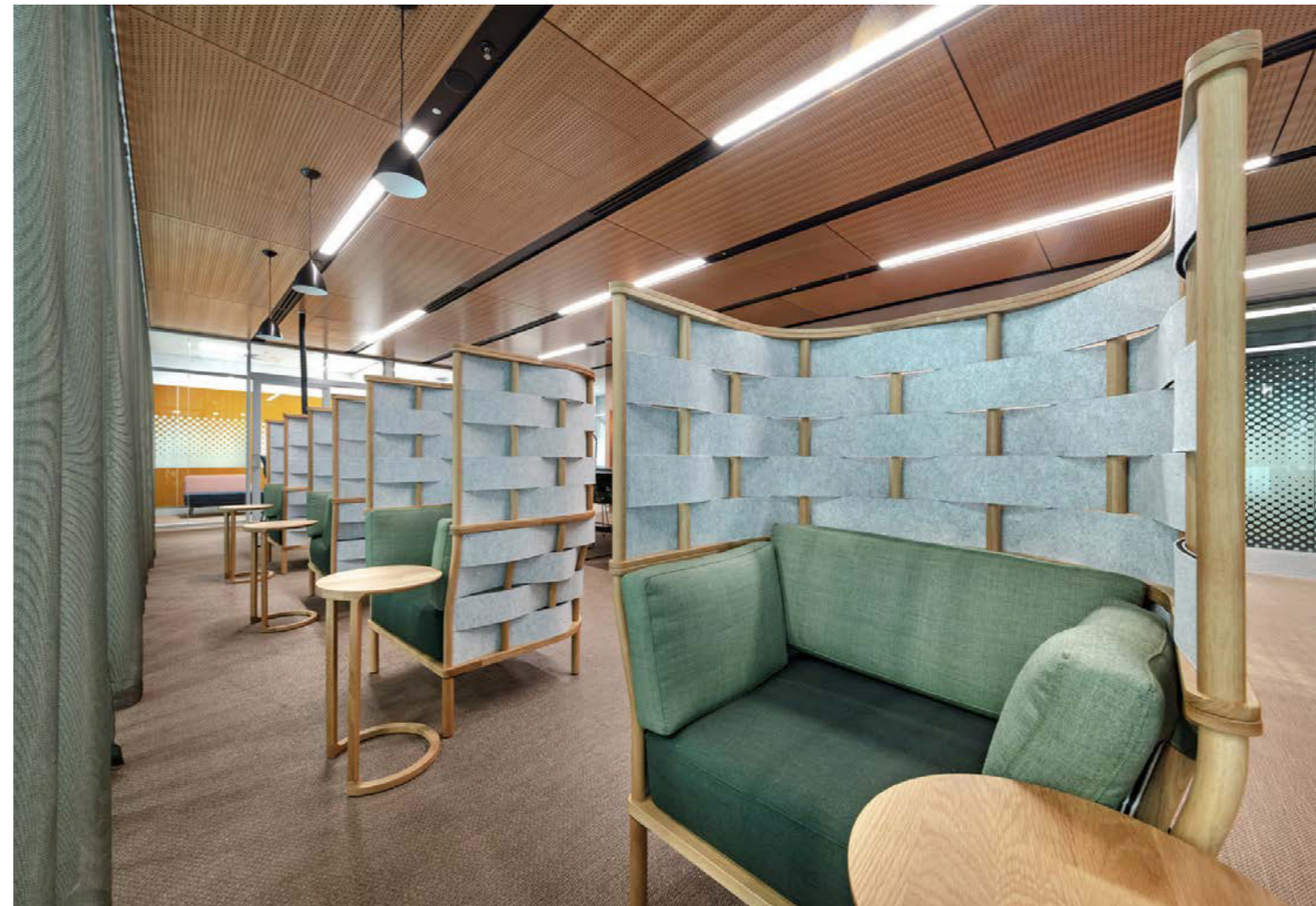


DEPARTMENT OF HOME AFFAIRS

The Department of Home Affairs Headquarters Project delivers a split precinct accommodation solution across four sites in Canberra.

The project establishes more flexible and adaptable accommodation to support current and future business needs, in addition to operational requirements in secure environments with surge capability.

The design solution applied all the core ingredients for a supported workplace environment with a landscape of opportunities from, cockpits and focused hubs through to collaboration hubs and huddle zones. The landscape of working opportunities also offers business lounges and community hubs.



LOC:	YEAR:	SQM:	SECTOR:
ACT	2021	85,000M²	WORKPLACE

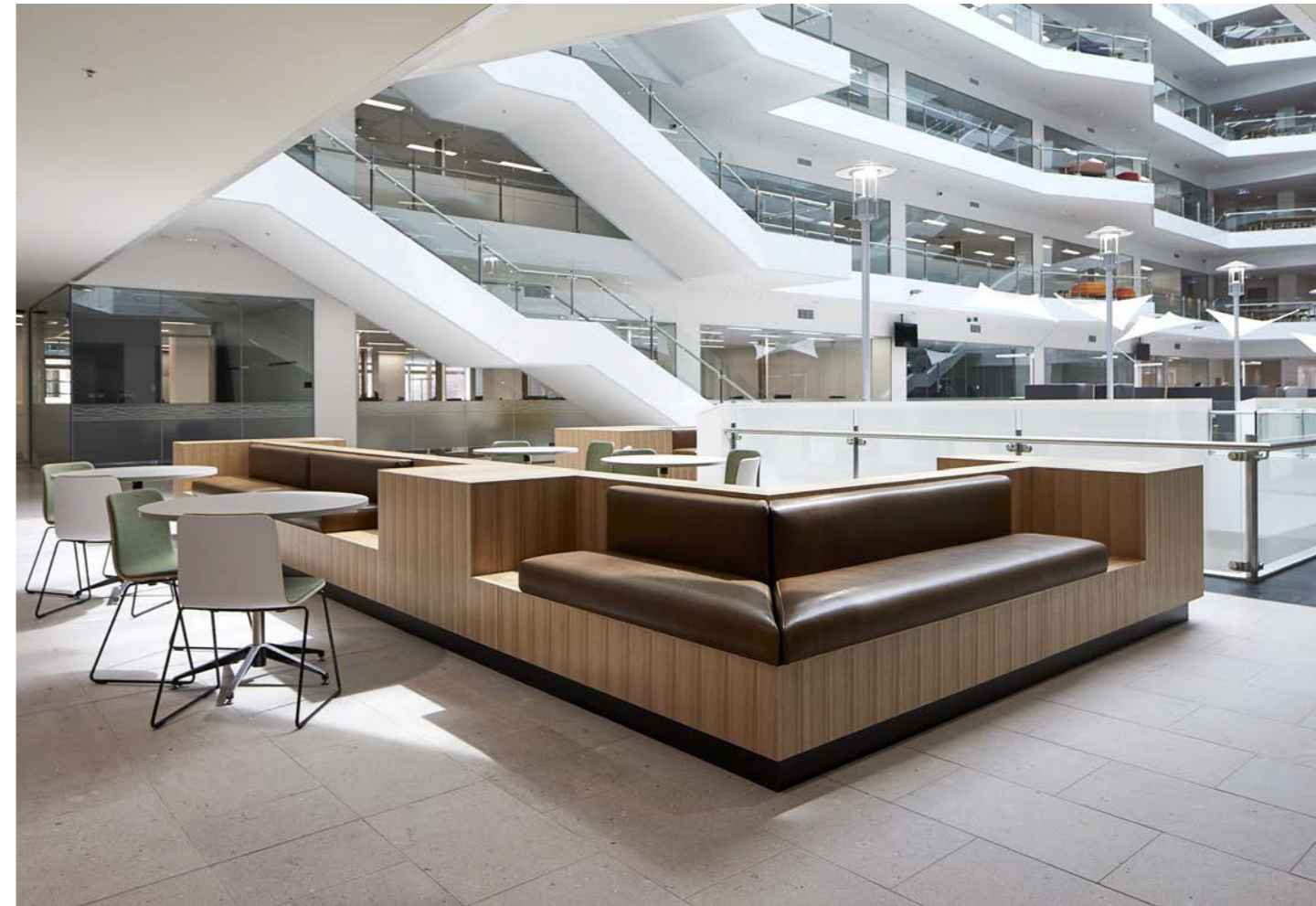


DEPARTMENT OF SOCIAL SERVICES

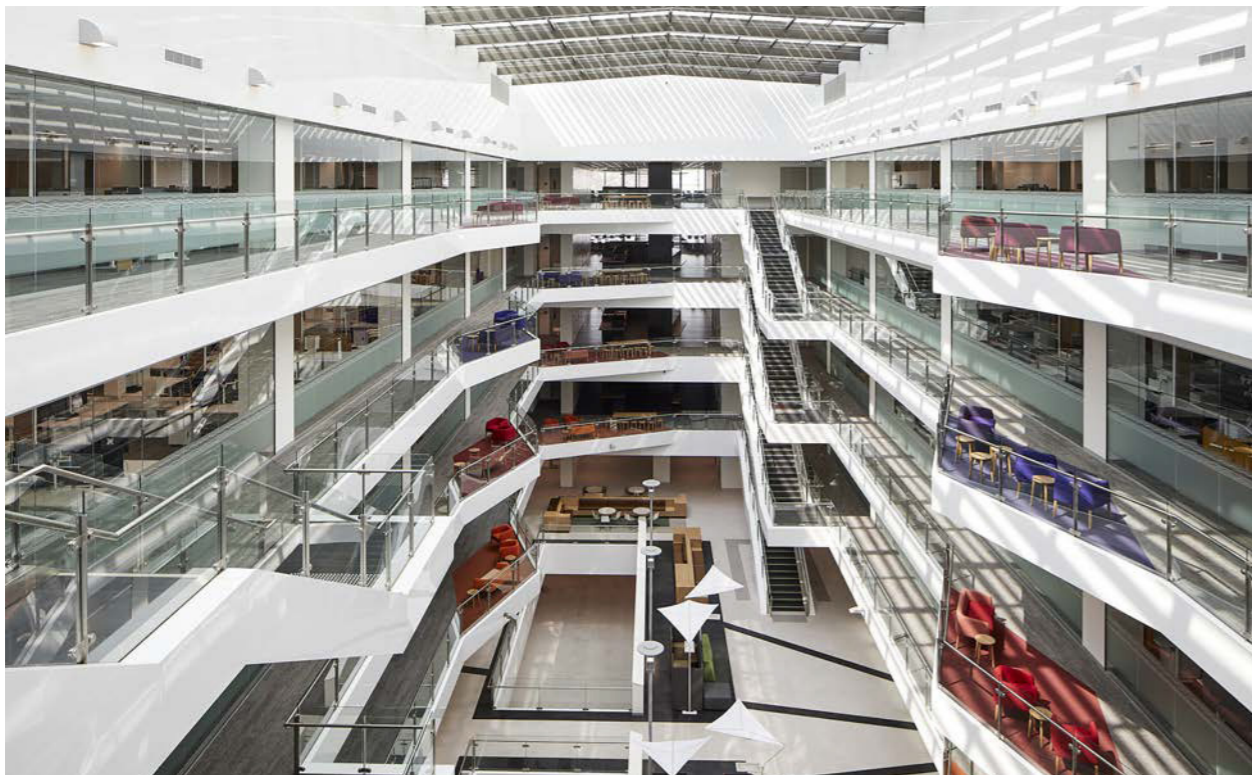
As a key component of the Staging & Decanting Bundled Package at The Canberra Hospital, this stage required the relocation of all inpatient services currently delivered in Building 3 into Building 1. The project also aimed to create additional beds to meet the growing demands of the ACT's population.

Space made vacant by the former Paediatrics ward on Level 4 was redeveloped into two new wards to accommodate Acute Aged Care and the Rehabilitation inpatient units. This was ideal space for these two services which already had two balconies for patients who would benefit from access to outdoor areas.

A co-located staff station|clinical handover room was incorporated into each of the Inpatient Wards. Combining these functions helped facilitate handover and clinical discussions within a private area. All Inpatient Wards also feature a combined clean utility|medication room to facilitate contemporary models of medication preparation and management.



LOC: **ACT** | YEAR: **2017** | SQM: **38,400M²** | SECTOR: **WORKPLACE**



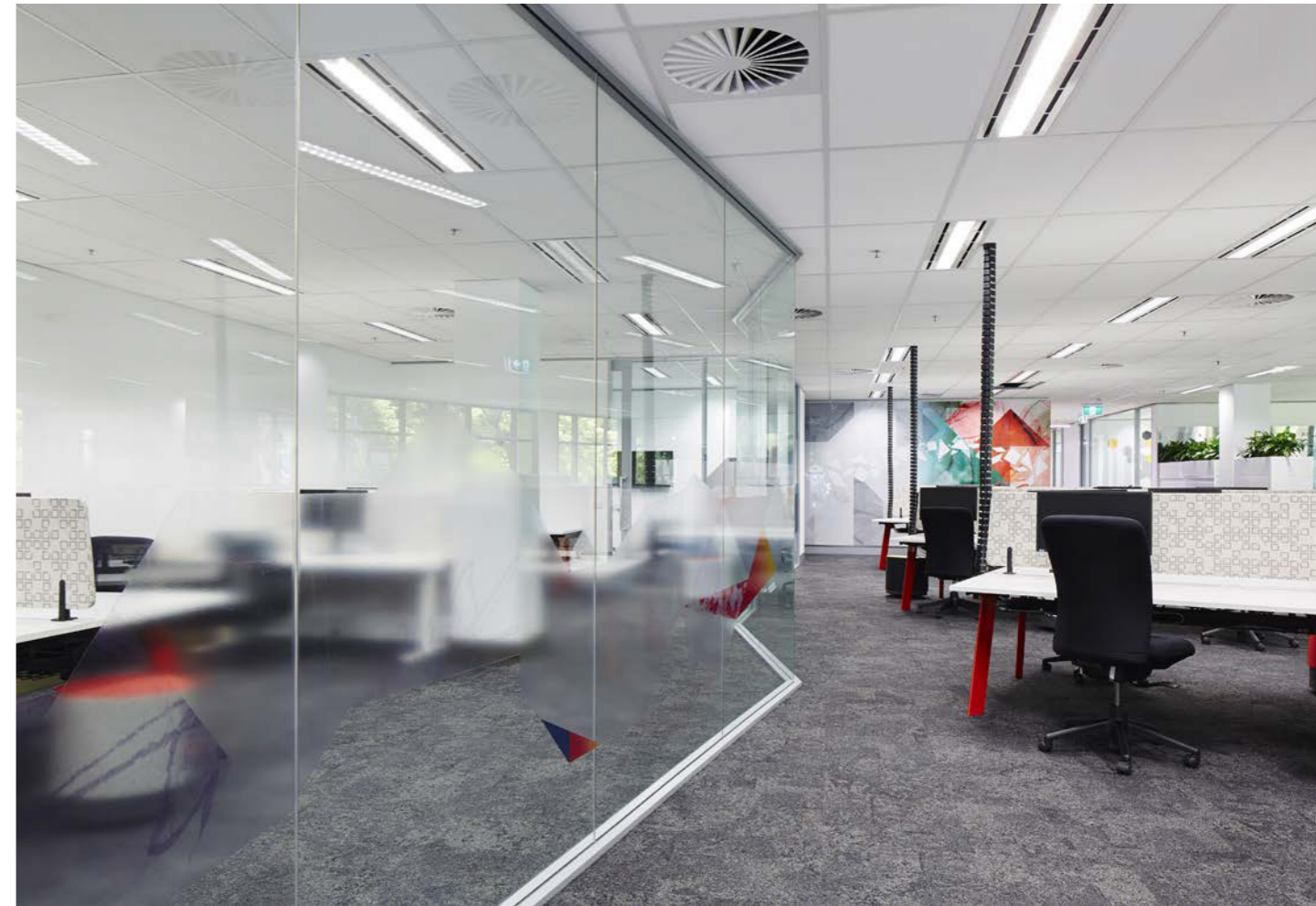
SYNERGY GROUP

Synergy Group's new workplace is a bright, vibrant and agile working environment. This highly responsive workplace adopts all the key ingredients to support new flexible working methods.

Encouraging interactivity and collaboration was at the heart of the project. With the key goal of talent retention, DJAS worked closely with Synergy to create an environment where the team could come together, collaborate and celebrate prior to disbanding back into Government department workplace environments.

The design offers a number of support and collaborative spaces - from central Hub with ping pong table, bean bags and fully-stocked fridge to interactive meeting spaces. It also features a 'playground' with swings, a park bench and replica 1960s phone booths for focused work.

Bringing the right mix of people together has allowed Synergy to celebrate a new way of working and in doing so, create a workplace which has received multiple accolades.



LOC: **ACT** | YEAR: **2016** | SQM: **578M²** | SECTOR: **WORKPLACE**



EDWARDS ANNEX TEACHING FACILITY

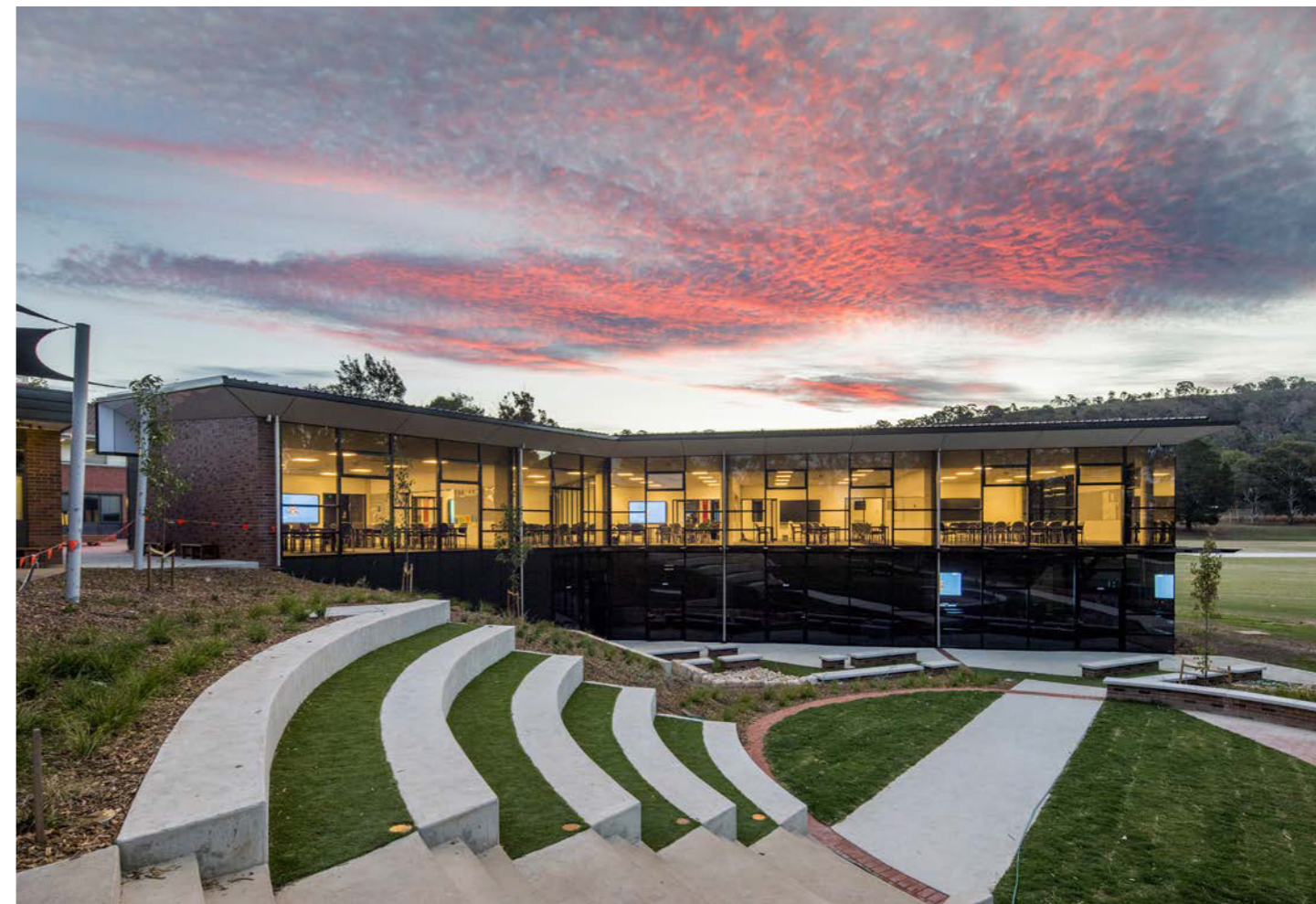
Celebrating their 90th anniversary, Canberra Grammar School is a campus with significant heritage values.

Adjacent to the heritage listed circular Chapel building and the Edwards Building, the Edwards Annex sits neatly in the landscape, drawing inspiration from the palate of brickwork and metal of the surrounding buildings. The dynamic design holds a respectful dialogue with the adjacent buildings of heritage significance.

The building has been designed to provide a reflective backdrop to the Chapel building through the use of full height tinted glazing folding around a circular open amphitheatre space. The classrooms are appropriately proportioned and can be easily expanded via the large sliding doors and operable walls. A generous curved corridor links the upper level classrooms with glimpses of the sports fields and Red Hill beyond through reduced aperture western glazing.



LOC: ACT | YEAR: 2018 | SQM: 2,000M² | SECTOR: EDUCATION



THE SNOW CENTRE FOR EDUCATION IN THE ASIAN CENTURY

Forming part of the Master Plan outcomes a new building is proposed to be located on the north-east side of the campus near the headmaster's residence occupying approximately 2000m² over three storeys.

In so doing the School plans to enhance: the study of Asian languages; culture and history; the professional development of teachers in Asia-related studies; and educational engagement between Australia and Asia. As a new flagship building for the school, the building will have a strong public presence and be an example of quality of architecture, corresponding with the quality of the education.

Through this project the school will be reshaping the learning environment to become more interactive and flexible. The Snow Centre for Education in the Asian Century will nurture this with flexible collaborative spaces, areas for smaller focus groups as well as larger classrooms that are visually linked throughout the building. Externally, the form and materials will bridge the strong heritage character of the site to the west, while the eastern façade is less formal with angled forms clad in zinc, punctuated with glazing.



LOC:	YEAR:	SQM:	SECTOR:
ACT	2014	2,000M²	EDUCATION



TIM FAIRFAX LEARNING STUDIO, NATIONAL GALLERY AUSTRALIA

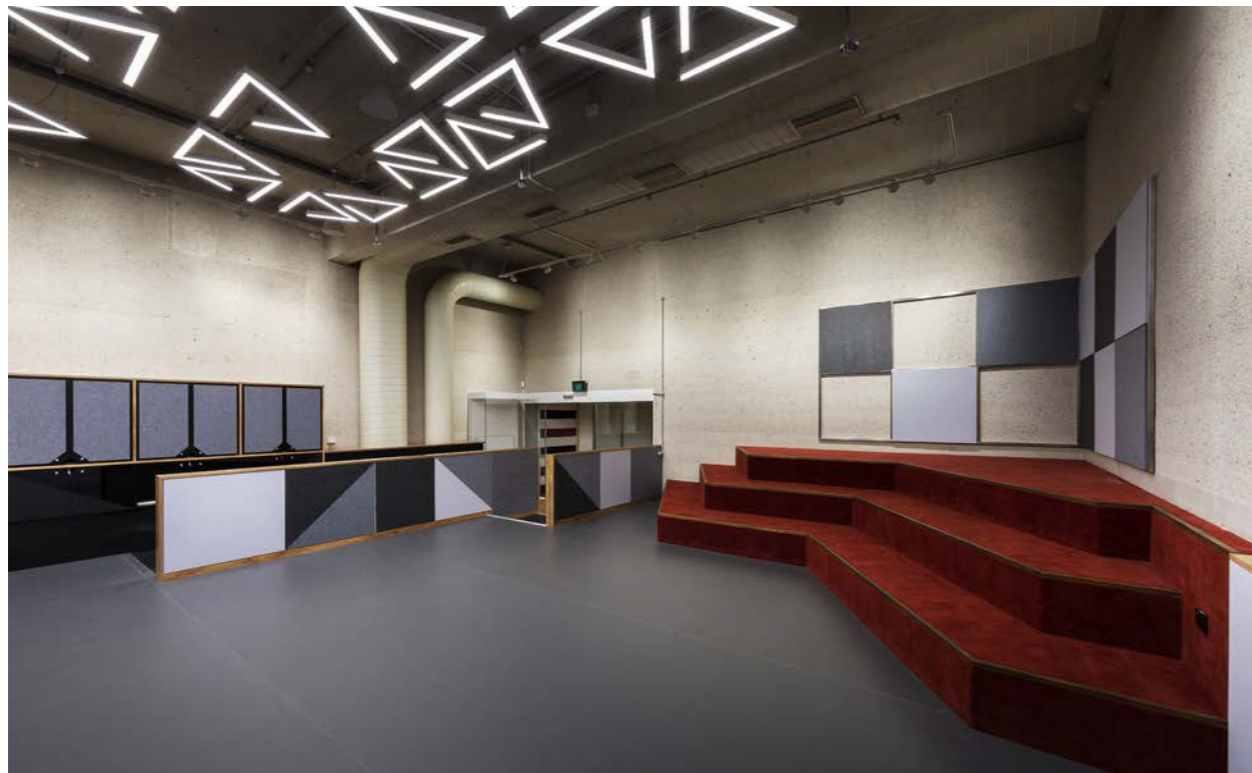
DJAS were engaged by the National Gallery of Australia (NGA) to transform an existing theatre into a studio space as part of the Gallery's deep engagement education program.

Working with a modest budget, the design team were able to provide a design which provides the NGA with flexibility; from creative workshops, making sessions, and engagement sessions for children and adults.

Working within one of Australia's most iconic buildings, DJAS had to carefully consider the design response with respect to the strong design ethos created by the original architect, Col Madigan. This was achieved by utilising similar materials of the existing building; Australian timber, rubber, and stainless steel were all carefully detailed to enable a sensitive addition into the space. Lighting requirements for the studio space drove the strongest design response, feature lighting suspended from the ceiling. These lights reinforce the triangular language established within the building, whilst also create a sense of intimacy within the cavernous concrete shell.



LOC: ACT | YEAR: 2021 | SQM: 150M² | SECTOR: PUBLIC ARCHITECTURE



DJAS IS A LEADING DESIGN PRACTICE WITH
PROFESSIONAL ARCHITECTS, URBAN, INTERIOR
AND GRAPHIC DESIGNERS.

CANBERRA STUDIO:

+61 2 6295 2000 49
JARDINE STREET,
KINGSTON, ACT, 2604

BRISBANE: +61 7 3905

9390 310 EDWARD
STREET, BRISBANE,
QLD, 4000

ARMIDALE: +61 412

682 738 122 FAULKNER
STREET, ARMIDALE,
NSW, 2350

WWW.DJAS.COM.AU
DJAS ARCHITECTURE PTY LTD