

+
S
A
R

ARCHITECTURE
CAPABILITY STATEMENT



We acknowledge First Nations peoples and their continuing connection to land, waters and culture, because we strongly believe in reconciliation and collaborative engagement for a better future.

We pay our respects to Elders past, present and emerging, whose knowledge, traditions and stories guide custodianship on what will always be their ancestral lands.



D J
+
A S

DJAS Architecture Pty Ltd was established in the ACT in 1987. Over the years, we have grown with design studios in Canberra, Brisbane and Armidale. DJAS is a leading design practice with professional architects, urban, interior and graphic designers.

June 2023



OUR COMPANY

DJAS ARCHITECTURE

WHO ARE WE?

DJAS has a national and international reputation for high quality design based on an ability to synthesise the conflicting demands of creativity, planning, staff involvement, cost effectiveness and quality design.

As an interdisciplinary design practice of professionals, we seek creative solutions within the built environment. We are motivated by the desire to provide sensitive and stimulating environments that articulate and facilitate all aspects of human encounter and endeavour.

DJAS works in a studio environment with all company directors and senior management seated with our team allowing for strong communication, project mentoring and quality control within our design process.

The success of our approach is demonstrated by the numerous awards we have received from the Australian Institute of Architects and other industry organisations.

OUR LEGACY



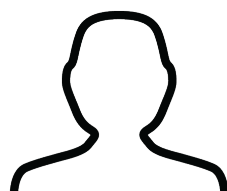
**ESTABLISHED
IN THE ACT IN 1987**

DJAS Architecture opened its first studio in 1987 located in Kingston, ACT and has now been operating for over 35 years.



**NATION WIDE OFFICES
IN ACT, QLD & NSW**

DJAS Architecture has a presence in Canberra (ACT), Brisbane (QLD) and Armidale (NSW).



**NATIONAL TEAM OF
34 EMPLOYEES**

With offices across Australia, DJAS employs a diverse group of architects and designers specialising in a range of fields.



**WORKING WITH 35
GOVT. DEPARTMENTS**

DJAS have worked alongside more than 35 government departments to produce amazing interior and architectural fitouts.



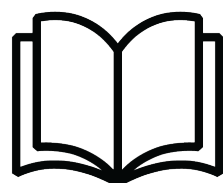
**350,000 SQM OF
OFFICE FITOUTS**

In the last 3 years, DJAS has designed over 350,000 sqm of office fitouts in various government and commercial spaces.



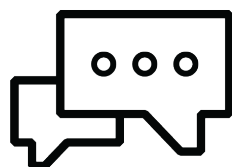
**ISO
CERTIFIED**

DJAS Architecture maintain certifications in ISO 9001: 2015, AS ISO 45001 & ISO 14001: 2015.



**TEACHING PRACTICE
OF STUDENTS**

DJAS are a teaching practice employing and supporting students first steps into the professional workforce.



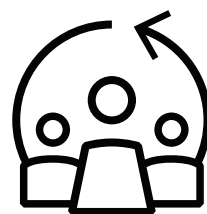
**20+ YEARS AVERAGE
LENGTH OF SERVICE**

Senior management have an average length of 20+ years service totaling at 138 years combined industry experience.



**RECIPIENT OF 70+
DESIGN AWARDS**

Throughout our many years operating, DJAS have received over 70 different design and architecture awards.



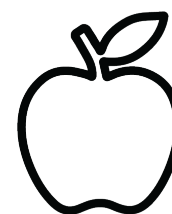
**DIVERSITY IN
THE WORKPLACE**

DJAS is proud to employ a gender diverse team, with rich and varied cultural influences and backgrounds.



**CARBON NEUTRAL
ORGANISATION**

DJAS continues to be a carbon neutral organisation and certified Climate Active network member.



**HEALTHIER
WORKPLACE**

DJAS are a recognised ACT 'Healthier Workplace' prioritising a balance of work, lifestyle and professional development.

OUR LEADERSHIP



James Andrews
Director



James Hetherington
Director



Alisa Moss
Director



Scott Hodgson
Director



Kylie Ochsenbein
Chief Operating Officer



Adam Litherland
Principal



Kate Bell
Senior Associate



Kate Treacy
Associate



Alice Coghlan
Associate



Ratko Vatauvuk
Senior Project Lead



Brendan Donnan
Senior Project Lead



Kate Hamilton
Senior Interior Designer

OUR TEAM

Our team comprises of accomplished architects and interior designers who are experienced in the design and delivery of specialty and unique environments.



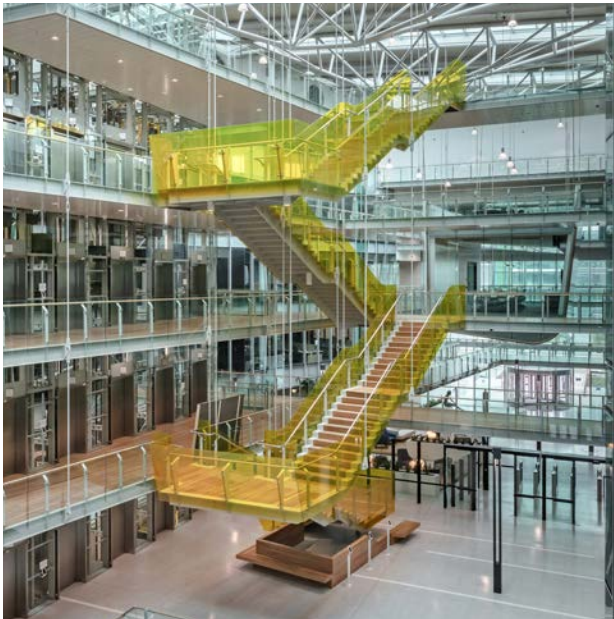
PICTURED
The Snow Centre for Education in the Asian Century, ACT

OUR DISCIPLINES

01.
ARCHITECTURE



02.
INTERIOR DESIGN



03.
URBAN DESIGN



04.
GRAPHIC DESIGN



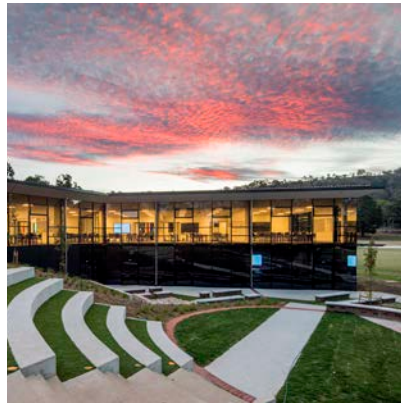
OUR SECTORS

01. WORKPLACE



- + Offices
- + Commercial
- + Government Base Building Repositioning

02. EDUCATION



- + Childcare & Early Education
- + Schools
- + Vocational
- + Universities
- + Student Accommodation

03. HEALTH



- + Hospitals
- + Medical Centres
- + Aged Care

07. RESIDENTIAL



- + Support Accommodation
- + Multi Dwelling Residential
- + Single Dwelling Residential
- + Embassies & Diplomatic Residential

08. AVIATION



- + Airports
- + Aircraft Maintenance
- + Charter Operations

09. INDUSTRIAL



- + Workshop
- + Vehicle Maintenance
- + Warehouse
- + Data Centres

04. PUBLIC ARCHITECTURE



- + Community Facilities
- + Libraries
- + Art Galleries
- + Museums
- + Sports Facilities

05. RESEARCH



- + Laboratory
- + Technical
- + Temperature Controlled Environments

06. SECURE ENVIRONMENT



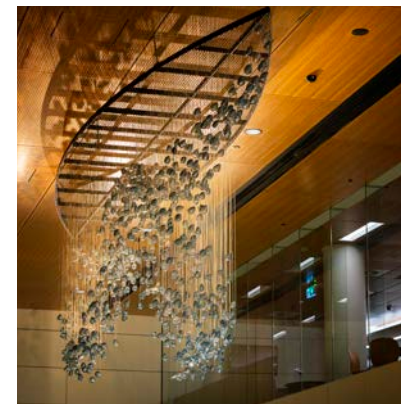
- + NV2 Security Clearance
- + Access Controlled Workplace
- + Crisis Management Centres
- + Operations Centres
- + Data Centres

10. MASTER PLANNING



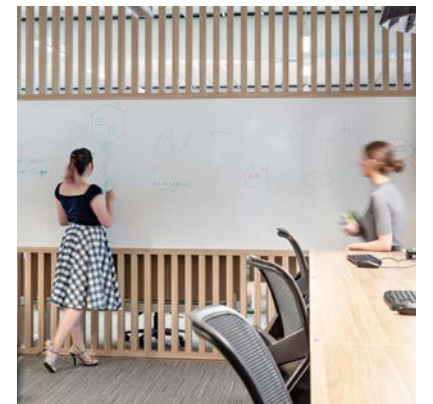
- + Urban Design
- + Campus Planning
- + Precinct Development
- + Strategic Asset Management
- + Space Occupancy & Utilisation

11. SPECIALTY



- + Small Scale Interventions
- + Artwork Coordination
- + Heritage Coordination
- + Exhibition Design

12. CHANGE STRATEGY



- + Workplace Strategy
- + Change Management
- + Post-Occupancy Review

OUR APPROACH TO DESIGN



PICTURED
Mt Stromlo Observatory, ACT

THE DJAS APPROACH

At DJAS we pride ourselves on our outstanding design services. Our project design process is a disciplined one and, on your project, we will take you through the project phases in sequential stages from inception to completion.

Design is an iterative process which involves; teamwork, attention to detail, coordination with services and close collaboration with stakeholders.

When we are appointed to design a new project, we approach the project as a collaboration between the client, project manager and designers. The most successful buildings are created within a team environment.

As designers we like to work closely with our clients to determine needs and discuss and critique the design as it evolves. We welcome the input from other members of the project team. As we seek to create innovative, energised and professional places for people to go about their daily life.

Our practice is acknowledged for adopting an open system of client / consultant dialogue whereby planning solutions are resolved in an interactive design process. We enjoy the challenges of working with large user groups, and have facilitation experts who can lead the design and planning process.

Our reputation lies in our ability to lead, explore, conciliate and resolve the critical issues of the planning process. We understand that we can only meet our client's objectives through comprehensive client and consultant dialogue.

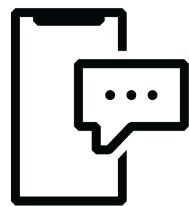
WHY US?

DJAS is different. Every project we deliver is different because every one of our clients comes to us with a unique proposal. It's a pleasure to collaborate with each client in realising their project to bring our expertise to the creation of authentic and enduring design solutions.



DESIGNING FOR CLIENTS

DJAS has extensive local, national, and international experience in architecture and interior projects. Our project portfolio demonstrates our ability to deliver successful and varied projects in both scale and complexity.



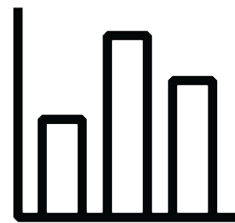
TECHNOLOGY & COMMUNICATION

In house technology and digital team to enhance project integration and collaboration with 3D visualisation, information transfer and VR experiences.



TECHNICAL COMPETENCE

A reputation for successful delivery that are both on time and on budget on numerous projects.



PROACTIVE PROCESS & MANAGEMENT

A proactive approach to design combined with proven management systems to manage risk and capitalise on opportunities.



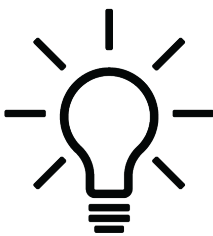
PICTURED
Mt Stromlo Observatory, ACT

A design practice which strongly believes in collaboration and bringing the 'right people' to the table. The concept of 'co-design' or 'open collaboration' is one of our strongest design philosophies. We are open and transparent with our design process and expertise.



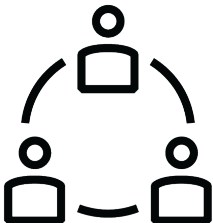
A BALANCED & COMMITTED TEAM

Which combines technical knowledge with the intuitive design skills of one of Australia's most respected design firms. Our design team is abreast of all current trends, founded on experience and research.



SUSTAINABILITY & LOW ENERGY DESIGN

We have received numerous awards for environmentally sustainable design including the first 5 Star Greenstar Education Building in the ACT and the first 5 Star Greenstar office building in Australia.



THE DESIGN TEAM

Non-hierarchical design team allowing for skilled and experienced designers present in all projects, large or small.



THE DJAS DNA

Being a skilled and multi-faceted design studio of graphic and interior designers, workplace strategists, architects and urban designers.

OUR SUSTAINABILITY

IN DESIGN



PICTURED
CGS Small Teaching Facility, ACT



SUSTAINABILITY

Our practice is committed to the design of sustainable buildings, and has been at the forefront of sustainable design since the design of the Australian Greenhouse Office in 2001.

Notable projects include:

- + John Gorton Building, Australian Greenhouse Office
- + 8 Brindabella Circuit, Brindabella
- + Australian Research Council
- + 3, 5, 7 Molonglo Drive, Brindabella Business Park
- + Caroline Chisholm Centre - New Centrelink Headquarters
- + University of Canberra NATSEM

CONTINUED

At DJAS Architecture we aim to create a healthy environment through commercial and sustainable environmental design. DJAS architects and interior designers are one of Australia’s most awarded environmentally sensitive design teams and were among Australia’s first architects to successfully complete the Green Star design accreditation program.

We are committed to green design principles and work closely with clients to incorporate energy and environmental savings with minimal impact on buildings costs.



PICTURED
Emergency Services Agency Facility

DJAS GREEN PHILOSOPHY

The Basics | Each project has its own sustainable design program, developed with key stakeholders at inception. When we commence designing a new building we aim to achieve correct solar orientation on the site, plan for floor-plates that are efficient but will permit excellent diffused daylight penetration and opportunities for natural ventilation. We also consider building mass, insulation of roofs and wall, landscape micro-climate, and water harvesting.

Flexibility | Sustainable design means economy in the life cycle of the building, so we focus on designing our buildings for durability and long term flexibility with unencumbered floors that can be easily adapted to other uses and higher than normal ceiling heights that will cope with changing design standards over the life of the building.

ESD Leaders | DJAS has been at the forefront of contemporary sustainable design for over two decades. Our journey commenced with Australia’s first 5 Star Green Star building and one of the first Green Star workplace designs in 2006. DJAS now embodies sustainable design attributes across all our projects. Designing for sustainability in our buildings and for our building occupants.

Green Star Professionals | We are Green Star trained professionals with staff regularly attending Green Star courses. Alisa Moss, one of our Directors, has undertaken specialist research in the USA into the design of healthy building environments.

OUR EXPERIENCE:

PAST PROJECTS



PICTURED
Murmuration

EXPERIENCE

The following projects represent a snapshot of projects undertaken by our office in recent times. This select list of projects illustrates our ability to respond well and directly to a range of different design problems on a range of different scales, from small to large design solutions.

Regardless of the size; each project receives the same detailed personal attention from our design directors.

The intrinsic qualities that set DJAS apart from our competitors are that we:

- + Provide a high level of personal service from our Directors and senior design team
- + Have demonstrated ability to manage major projects
- + Are focused on project outcomes
- + Accept responsibility for project performance and quality
- + Understand the concepts and relationships between risks and performance

MT STROMLO OBSERVATORY

The Advanced Instrumentation and Technology Centre – Stage 1 has been designed for the ANU Research School of Astronomy and Astrophysics to accommodate their Mechanical Design Department, Electronics Design Department, Optics Manufacturing, the Integration Hall and associated support areas.

The design is derived from functional requirements and can be broken into four elements – three box like elements; the Integration Hall, Optics Area, ‘Office’ Area and a curvilinear linking element that ties them together. The curvilinear element has the strongest expression from the northern elevation and references the telescope dome structures that are traditionally seen at observatories.

It forms a new corporate identity for the RSAA speaking of traditional enterprises transforming and adapting to new horizons of astronomical research. From the South the building is sympathetic to the existing buildings and landscape forming a man made escarpment sitting upon the mountainside.



LOC:	YEAR:	SQM:	SECTOR:
<u>ACT</u>	<u>2006</u>	<u>2,015M²</u>	<u>RESEARCH</u>



SIKORSKY MH-60R TLS FACILITIES

Commissioned by Sikorsky Helitech to meet the ongoing training and maintenance needs of the Royal Australian Navy at HMAS Albatross, the MH-60R TLS will deliver a variety of operational and maintenance functions necessary throughout the life of the MH60 Romeo Seahawk aircraft.

These facilities will provide an 8 bay maintenance hangar with back-shops sufficient to support the maintenance of aircraft, components, and support equipment. An ancillary building accommodates the logistics warehousing in accordance with the Defence Supply Chain Manual.

The facility will be certified under the LEED Building Design and Construction rating system to ensure a sustainable and efficient work environment. The TLS is planned to provide Sikorsky Helitech with expansion opportunities should they be required into the future.

LOC:	YEAR:	SQM:	SECTOR:
NSW	2016	10,100M²	AVIATION



JOHN JAMES VILLAGE

John James Village provides respite accommodation free of charge for patients from regional areas who are undergoing treatment in Canberra for blood borne diseases, such as Leukaemia. The village is designed to be a 'home away from home' for the patients and their families whilst they are in Canberra.

The complex has been designed as a village, with the communal core zones located centrally on the site and the residential units dispersed throughout the landscaped grounds. The patients access the units through calming gardens and each unit has a separate identifiable entrance that reinforces the homely feeling for each patient. The units are tailored to meet the needs of the patients with north facing living and main bedroom areas, with additional space for carers and family members to support the patients during their treatment.



LOC: ACT | YEAR: 2016 | SQM: 7,173M² | SECTOR: HEALTH / RESIDENTIAL



THE CANBERRA HOSPITAL, ALLIED HEALTH BUILDING 15

The Allied Health Building is a 2 storey facility designed to provide a combination of clinical functions and non-clinical functions for various hospital services. Constructed using a prefabricated demountable shell, the simple rectangular floor plan pushes building services and vertical circulation beyond the building edge giving an uninterrupted floor plan that can be subdivided in a number of ways.

A modular building with a highly flexible floor plan provides the project a great deal of operational flexibility in the short and medium term. The new building provides for The Canberra Hospital's immediate decanting requirements, and in following stages, the building can be reconfigured for other clinical or support uses as required. The configuration of these services align with current health planning principles where the clinical consultation space is located separately from the staff accommodation. A shared clinical area located on Level 1 is comprised of a combination of bookable clinical spaces which include interview rooms, consult rooms and treatment rooms. In order to maximise efficiency of use, a generic approach has been undertaken to standardise the equipment and layout of these rooms where practical. Another key objective was to maximise the efficiency of the non-clinical space by sharing workspaces where applicable and providing common centralised staff amenities right across Level 2.



LOC:	YEAR:	SQM:	SECTOR:
ACT	2015	2,450m²	HEALTH



3, 5 & 7 MOLONGLO DRIVE

A five storey office building at Brindabella Business Park with an NLA of 35,000m2. Floorplate widths have been increased to maximise commercial fit-out flexibility. An impressive atrium minimises the external envelope, while also allowing natural light to penetrate into the office space and create a sheltered semi-public space where social interaction is encouraged on stairs, bridges and walkways.

Other informal breakout space opportunities have been provided including cafes, terraces, and timber seating platforms. An amphitheatre, several conference rooms and an enclosed theatre are also incorporated. External sun screening has been used extensively to reduce solar heat gain and glare.

The building is designed to achieve a 5 star Green Star and 5 Star NABERS rating. An integral component in achieving this is the Tri-generation energy system which uses natural gas to create electricity, heating and cooling, with 50% less emissions than conventional systems, Even waste heat is captured and converted into usable heating and cooling via heat exchangers and an absorption chiller.

LOC:
ACT

YEAR:
2006

SQM:
35,000m²

SECTOR:
WORKPLACE



CANBERRA GIRLS GRAMMAR EARLY LEARNING CENTRE EXPANSION

The new Early Learning Centre building at Canberra Girls Grammar School is an expansion to their current facilities originally designed by Daryl Jackson Alastair Swayn.

The building creates an intimate and welcoming courtyard playground space with increased protection from the wind and sun. The additional outdoor play space, required for the increased number of students is provided across both levels, creating a mixture of covered and uncovered spaces for a variety of outdoor learning activities.

The construction approach needed to be sensitive to the requirement for the facility to remain in operation throughout the project. Through the use of prefabricated modular panels pre-assembled in a factory, the erection of the primary structure, facade, glazing and roof was completed within 5 days.



LOC: **ACT** | YEAR: **2019** | SQM: **826M²** | SECTOR: **EDUCATION**

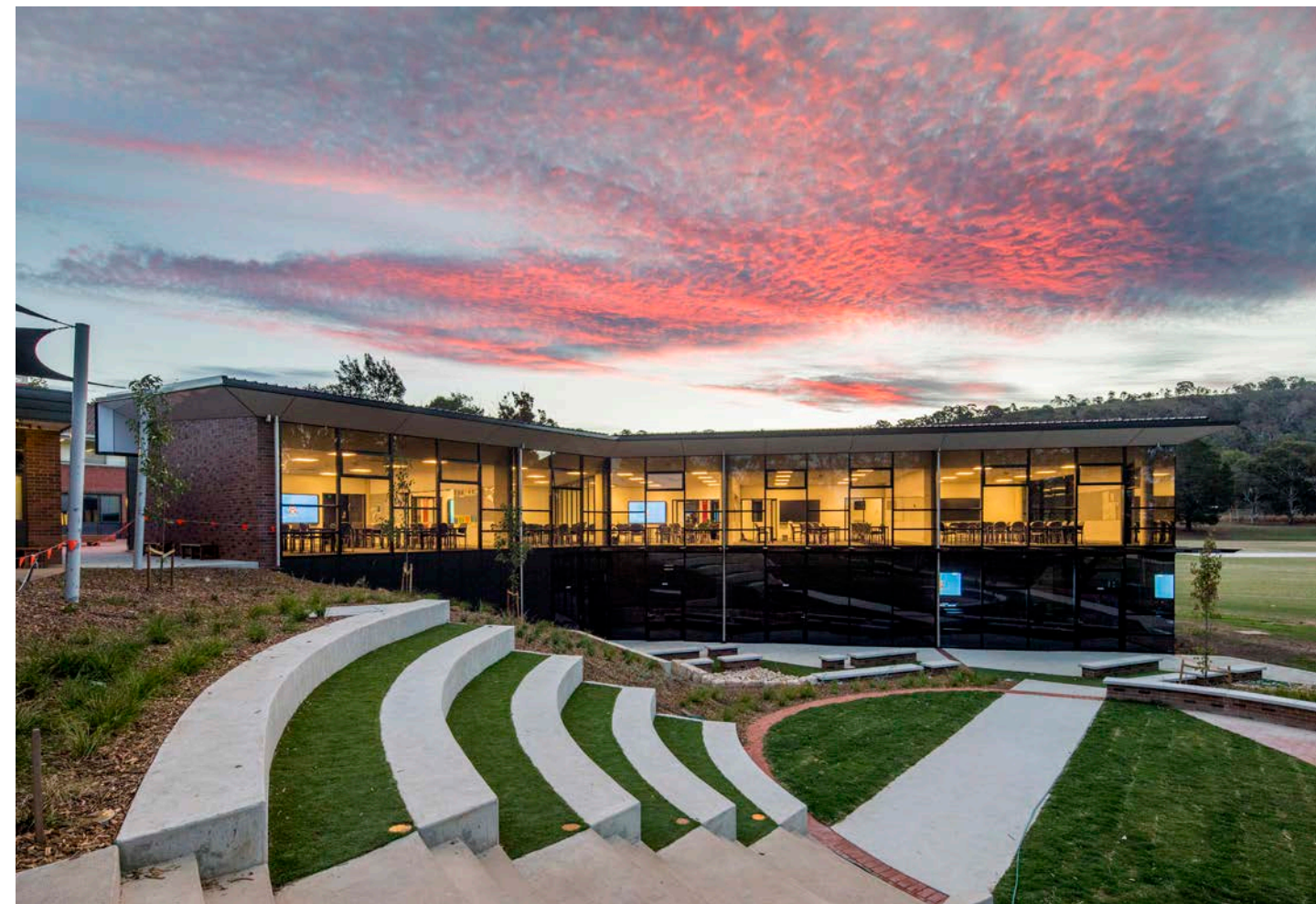


EDWARDS ANNEX TEACHING FACILITY

Celebrating their 90th anniversary, Canberra Grammar School is a campus with significant heritage values.

Adjacent to the heritage listed circular Chapel building and the Edwards Building, the Edwards Annex sits neatly in the landscape, drawing inspiration from the palate of brickwork and metal of the surrounding buildings. The dynamic design holds a respectful dialogue with the adjacent buildings of heritage significance.

The building has been designed to provide a reflective backdrop to the Chapel building through the use of full height tinted glazing folding around a circular open amphitheatre space. The classrooms are appropriately proportioned and can be easily expanded via the large sliding doors and operable walls. A generous curved corridor links the upper level classrooms with glimpses of the sports fields and Red Hill beyond through reduced aperture western glazing.



LOC:	YEAR:	SQM:	SECTOR:
<u>ACT</u>	<u>2018</u>	<u>2,000m²</u>	<u>EDUCATION</u>



THE SNOW CENTRE FOR EDUCATION IN THE ASIAN CENTURY

Forming part of the Master Plan outcomes a new building is proposed to be located on the north-east side of the campus near the headmaster's residence occupying approximately 2000m² over three storeys.

In so doing the School plans to enhance: the study of Asian languages; culture and history; the professional development of teachers in Asia-related studies; and educational engagement between Australia and Asia. As a new flagship building for the school, the building will have a strong public presence and be an example of quality of architecture, corresponding with the quality of the education.

Through this project the school will be reshaping the learning environment to become more interactive and flexible. The Snow Centre for Education in the Asian Century will nurture this with flexible collaborative spaces, areas for smaller focus groups as well as larger classrooms that are visually linked throughout the building. Externally, the form and materials will bridge the strong heritage character of the site to the west, while the eastern façade is less formal with angled forms clad in zinc, punctuated with glazing.



LOC: **ACT** | YEAR: **2014** | SQM: **2,000m²** | SECTOR: **EDUCATION**



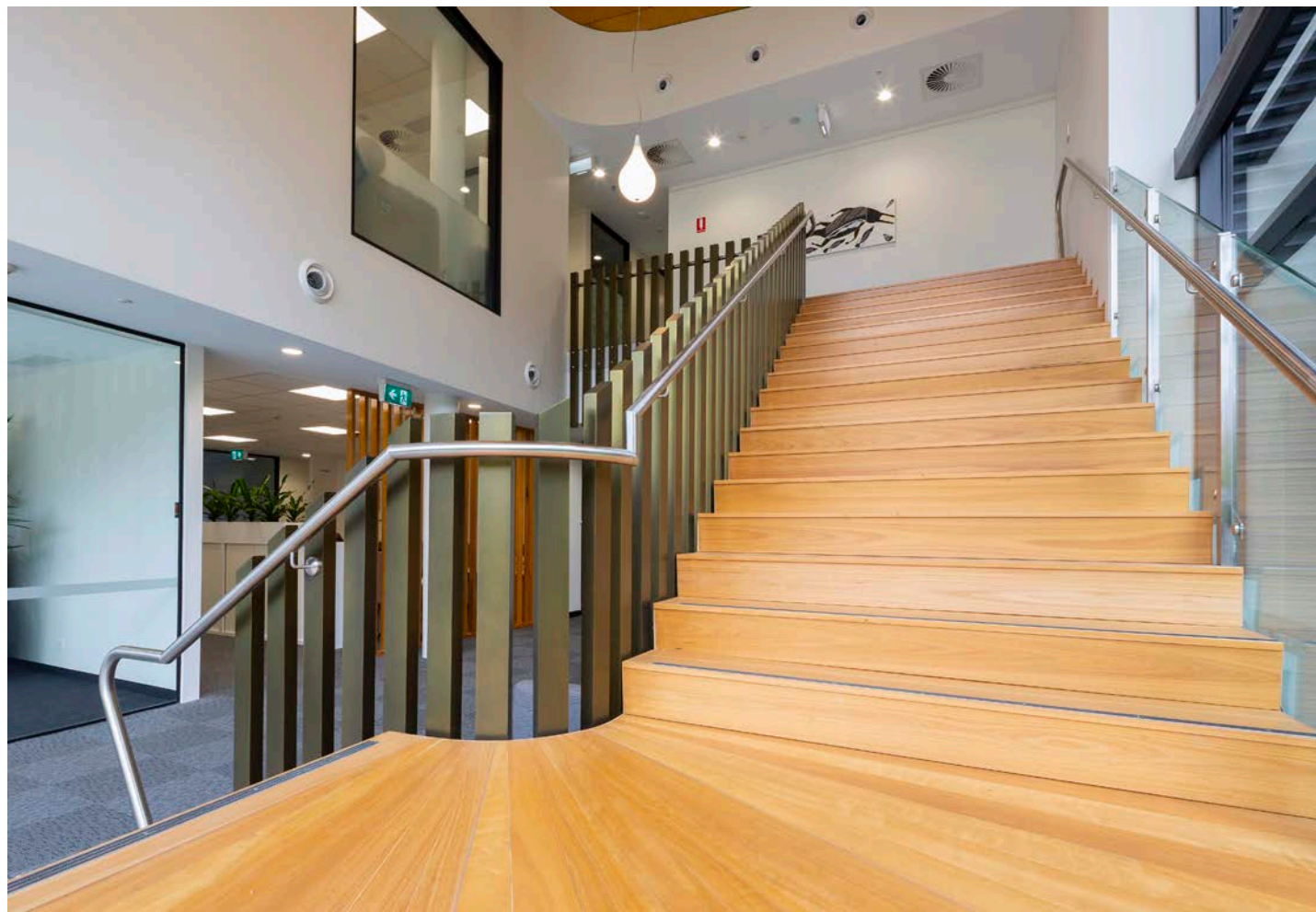
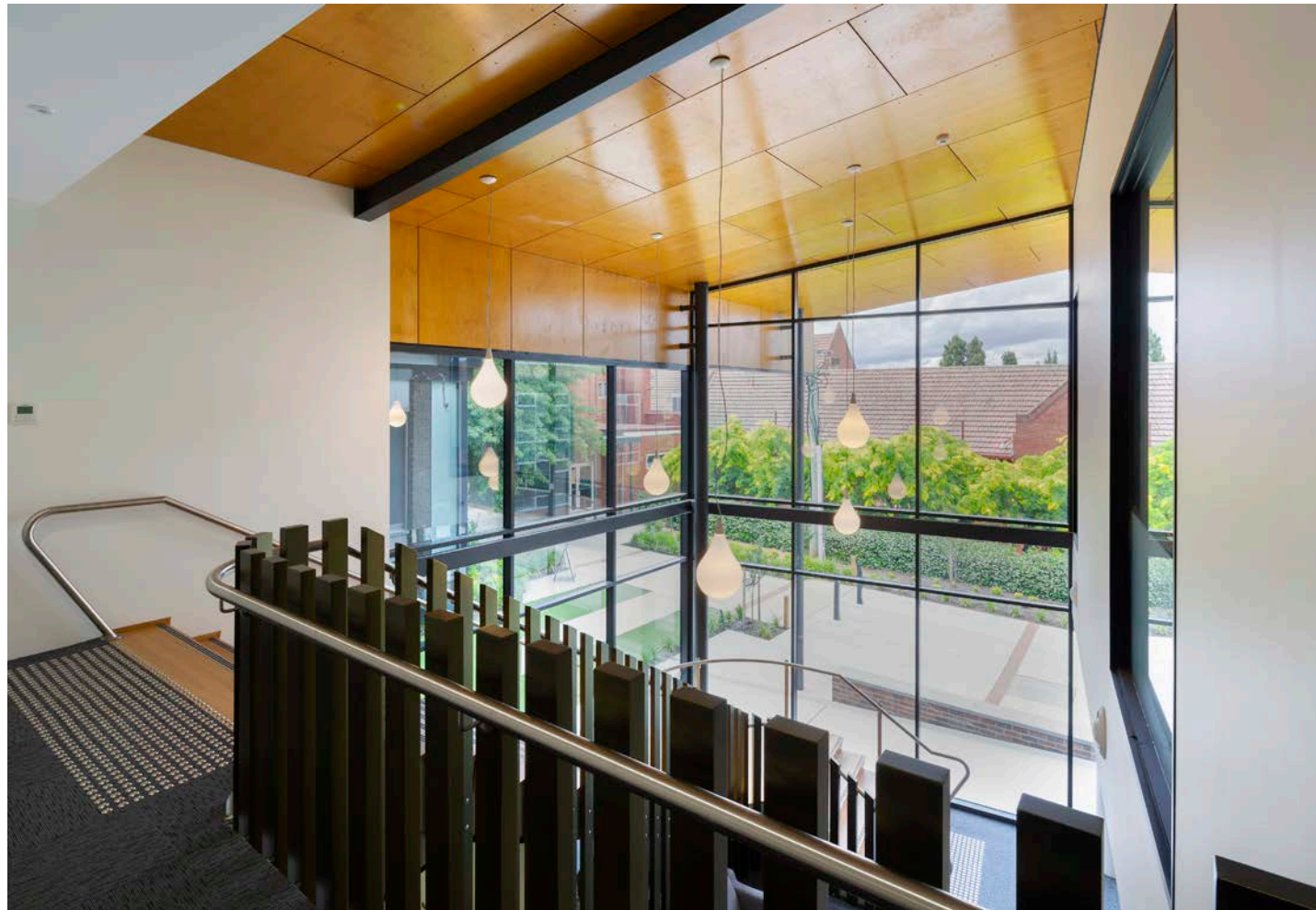
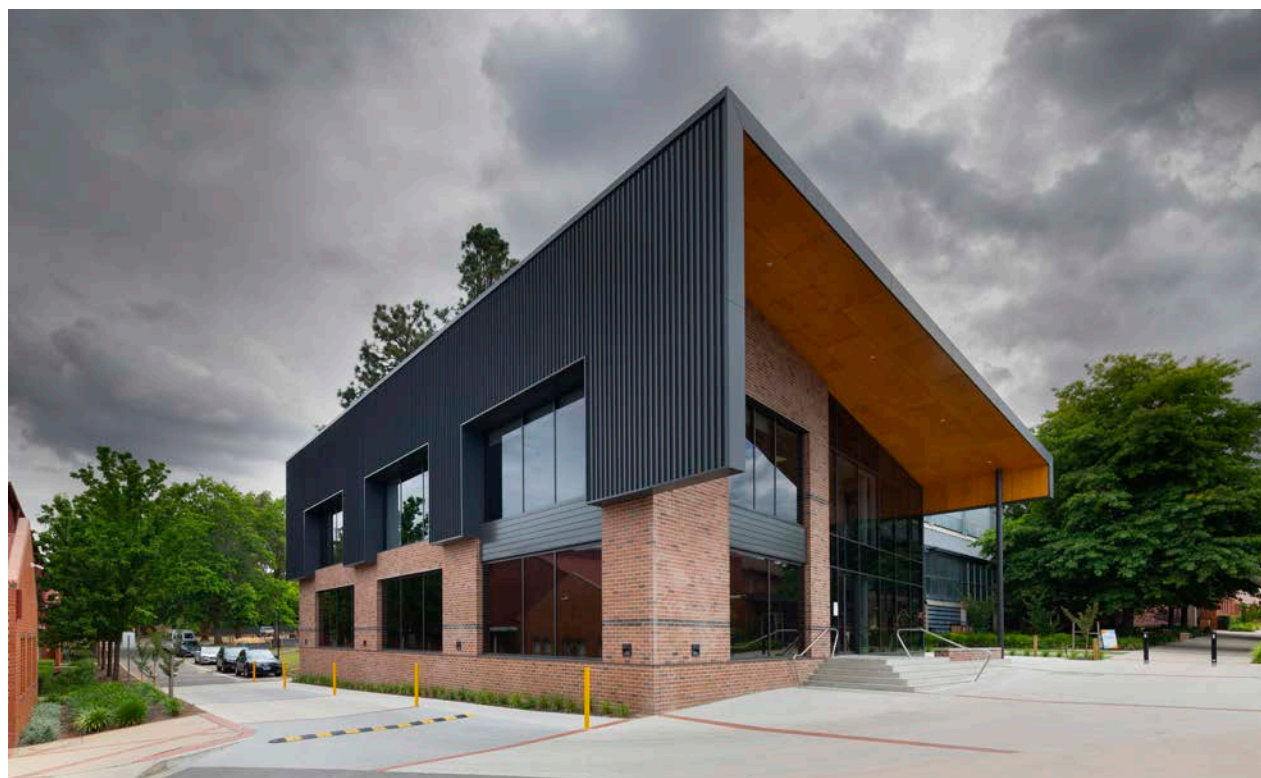
CANBERRA GRAMMAR SCHOOL ADMIN

The new administration building at Canberra Grammar School is an addition to the school campus reflecting the client's brief. The design provides a facility that allows flexibility in how spaces can be rearranged for a variety of purposes.

The offices are proportioned according to their use and are purposefully designed to have access to direct sunlight. Extensive full height glazing links the staff to the external landscape, fostering a sense of connection with the environment. A generous stair within a double storey volume vertically links the ground floor with the upper-level head offices and the boardroom.

The brick façade works in unison with the adjacent buildings yet achieves a distinctly dynamic and attractive design. The stair volume, together with the cantilevered roof, have been deliberately positioned to clearly indicate the main entrance. The overall geometry of the building provides a subtle but distinctive landmark for the campus.

LOC: **ACT** | YEAR: **2019** | SQM: **927M²** | SECTOR: **EDUCATION**



BELCONNEN ARTS CENTRE STAGE 2

The new Performing Arts building at the Belconnen Arts Centre is an expansion to their current facilities, originally only designed for visual artistic endeavors and amateur dance capabilities. As the project involved attachment modifications to an existing and operational Arts centre, the design and construction approaches needed to be sensitive to the requirement of having the facility remain operational throughout.

The building creates a grand yet intimate and welcoming entry forecourt space as the public enters from the street-side. The forms flanking the entry then funnel patrons into the expansive theatre foyer which in turn brings the public into the performance space through a closer, more intimate passage point which works to enhance the experience of what is about to occur beyond.

DJAS, with their consultant and client teams, have taken great appreciation in the original adjacent visual arts facility's design and the project expectation that we were to work with and enhance it through these additions. Working closely with our team of specialist consultants has resulted in a well thought out and thoroughly coordinated design solution.



LOC: ACT	YEAR: 2017	SQM: 885M²	SECTOR: PUBLIC ARCHITECTURE
--------------------	----------------------	---------------------------------	---------------------------------------



MAJURA PARK RECREATIONAL CENTRE

Majura Recreation Centre is located at Majura Park, Canberra Airport. The 1,200m2 facility includes a 25m lap swimming pool, two junior learn-to-swim pools, a fitness centre, shower and change facilities and provisions for a cafe.

The simple, yet striking building was primarily derived from the internal space requirements of the pool hall. Exposed raking steel trusses above the pools create a spacious and light filled volume. High level south facing glazing above the split level roof allows natural light into the pool hall without creating glare and unwanted reflections from the water.

Combining the fitness and swimming needs of adults as well as children's learn-to-swim classes, the facility provides a range of pool sizes and pool depths as well as a mix of shower and change facilities to cater for individuals and families.



LOC: ACT | YEAR: 2011 | SQM: 1,200m² | SECTOR: PUBLIC ARCHITECTURE



DJAS IS A LEADING DESIGN PRACTICE WITH
PROFESSIONAL ARCHITECTS, URBAN, INTERIOR
AND GRAPHIC DESIGNERS.

CANBERRA STUDIO:

+61 2 6295 2000
49 JARDINE STREET,
KINGSTON, ACT, 2604

BRISBANE:

+61 7 3905 9390
310 EDWARD STREET,
BRISBANE, QLD, 4000

ARMIDALE:

+61 412 682 738
122 FAULKNER STREET,
ARMIDALE, NSW, 2350

WWW.DJAS.COM.AU
DJAS ARCHITECTURE PTY LTD